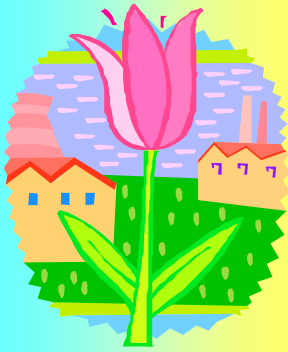


**In this Issue**

Drug Disposal Information . . . . . Page 2  
 Earth Day 2009 . . . . . Page 2  
 Clean Sweep 2009 (insert) . . . . . Page 3  
 Clean Sweep 2009 (insert) . . . . . Page 4  
 Compost Information—NEW HOURS. . . . . Page 5

**TOURS & PRESENTATIONS**

Do you want to learn:  
 What we do at the Recycling Center?  
 More about composting?  
 What you can do to recycle better?  
 Call 683-4333 and set up a tour or group presentation



**MRFUTURE  
 Spring 2009**

**Governor's State of WI Budget Proposal: Recycling & Solid Waste Impacts  
 March 26, 2009 Factsheet**

Increases in fees on solid waste disposal (applies to each ton of waste disposed of in WI, except high volume industrial by-products)

- ⇒ Recycling Tip Fee Surcharge from \$4.00/ton to \$5.00/ton
- ⇒ Environmental Repair Fee from \$1.60/ton to \$5.00/ton (212% increase)
- ⇒ **Combined increase of \$4.40/ton**

**RECYCLING TIP FEE SURCHARGE IMPACT Increase of 67% since 2007**

	2008 Tonnage	Oct. 2007 \$3.00/ton	Current \$4.00/ton	Proposed \$5.00/ton	Impact (Increase)
City of Manitowoc	22,872	\$68,616	\$91,488	\$114,360	\$22,872
City of Two Rivers	6,247	\$18,741	\$24,988	\$31,235	\$6,247
Other County Municipalities	4,944	\$14,832	\$19,776	\$24,720	\$4,944
<b>Total Recycling Tip Fee Increase to Manitowoc County Programs</b>					<b>\$34,063</b>

**Total Increase in Solid Waste Fees:**

**City of Manitowoc \$100,637**

**City of Two Rivers \$27,487**

**Other County Municipalities \$21,754**

**TOTAL INCREASE MANITOWOC COUNTY**

**\$149,878**

**ENVIRONMENTAL REPAIR FEE IMPACT Increase of 900% since 2007**

	2008 Tonnage	Oct. 2007 \$0.50/ton	Current \$1.60/ton	Proposed \$5.00/ton	Impact (Increase)
City of Manitowoc	22,872	\$11,436	\$36,595	\$114,360	\$77,765
City of Two Rivers	3,124	\$3,124	\$9,995	\$31,235	\$21,240
Other County Municipalities	4,944	\$2,472	\$7,910	\$24,720	\$16,810
<b>Total Env. Repair Fee Increase to Manitowoc County Programs</b>					<b>\$115,815</b>

**Other Solid Waste/Recycling Grant Programs Reduced or Eliminated**

- ◇ Recycling Grants to Responsible Units of Government reduced from \$31 million to \$30.69 million/year
- ◇ Recycling Efficiency Grants to Responsible Units of Government (RUs) are repealed – was appropriate at \$1.9 million per year (DNR reduced to \$1.4 million in current grant cycle)
- ◇ Waste Reduction and Demonstration Grant Program repealed - \$500,000/year
- ◇ Business waste reduction and recycling assistance program repealed - \$1 million/year
- ◇ Clean Sweep Program (DATCP–Ag Chemical, Ag container and HHW) eliminated - \$1 million/year

**Total Impact to Manitowoc County and it's Municipalities with the increase in tipping fees and lost of grants for environmental programs is \$219,993. Or if these programs were to be maintained at the same levels and having to pay for tipping fees it amounts to about a one percent increase in the tax levy.**

For more information call  
 Recycling Center  
 920-683-4333  
 Or visit  
[manitowocrecycles.org](http://manitowocrecycles.org)

**MRF Mission Statement:** To provide materials recycling and recovery services to the citizens of Manitowoc County and to keep the public informed about recycling issues.

# Manitowoc County Drug Disposal Programs

## Earth Day 2009

**Thursday, April 16**

**10am—2pm**

**Lakeshore Technical College  
East Entrance—Wells Fargo Room**

Please note **TWO**  
different collection  
dates!

**Saturday, April 18**

**10am—2pm**

**UW Manitowoc  
705 Viebahn, Manitowoc**

### Acceptable Items:

- . Prescription medications
- . Over-the-counter drugs
- . Controlled substances
- . Illegal drugs
- . Animal medications

### Guidelines:

- . Needles and sharps will **not** be accepted.
  - . Keep items in original containers.
  - . Do not mix medications in the same container.
  - . You may block out personal information on the drug container, but please keep the drug name visible.
  - . Businesses may participate (charges may apply)
- Pre-registration required:  
Call 683-4333

☆☆☆☆☆☆☆☆☆☆☆☆☆☆☆☆☆☆☆☆

### MERCURY THERMOMETER EXCHANGE PROGRAM

Bring in your mercury or basal thermometers and receive a complimentary digital thermometer (limit one digital thermometer per household) All mercury and mercury containing devices will be accepted;

### Bring in Your...

- Batteries
- Plastic Bags
- Old Athletic Shoes
- Compact Fluorescent Bulbs
- Ground Water for testing
- Mercury Thermometers
- Ink/Jet Printer Cartridges
- Pharmaceuticals

### Schedule

**11am Renewable Energy— Wind Energy**

Presented by: Jennifer Heinzen &  
Doug Lindsey—LTC

**Noon Nature Hike**

**1pm \$1 a Bag - Rummage Sale**

**1:30 pm RecycleMania Results  
Recycle Caps Results**

### **SHOP!**

**AT THE EARTH DAY EVENT**

**UW & LTC PhiThetaKappa  
Community Rummage Sale**

### **DONATE!**

Spring Cleaning?

Don't want the hassle of a rummage sale?

Bring us your stuff!! **WE will sell it!**

Remaining goods donated to **Goodwill.**

**Bring donated items in to:**

Student Services at LTC or UW

April 13-17

8am-4pm (Fri till 5pm)

**EARTH DAY  
2009  
Manitowoc County  
April 18  
UW Manitowoc  
705 Viebahn St Manitowoc  
10am—2pm**

### Participants

- Art & About
- Bay Lakes EcoWater
- Cartridge World
- Discovery Farms
- Glacial Lakes Conservancy
- Go Green Manitowoc
- Green Sky Energetics
- Lakeshore Natural Resources
- Lakeshore Technical College
- League of Conservation Voters
- Manitowoc Farmers Market
- Manitowoc Co Lakes Association
- Manitowoc Co Recycling Center
- MPU
- Orion Energies
- Rolling Acres Native Landscaping
- Roorbach's Flowers
- Silver Lake College
- UW Manitowoc
- Walmart
- WI DNR
- WI Maritime Museum
- Wild Ones
- Woodland Dunes Nature Center

### For the Kids!

- Recycled Art
- Make paper beads
- Plant A Seed

**Green Generation**

For more information call: 920 683 5014 or visit [www.manitowocrecycles.org](http://www.manitowocrecycles.org)

### Event Partners

UW Manitowoc—Lakeshore Technical College—Silver Lake College—Manitowoc Co Recycling Center

# Hazardous Waste Clean Sweep 2009

**MAY 16**

**FREE!**



Corrosive



Toxic



Flammable materials

## MANITOWOC COUNTY CLEAN SWEEP

Saturday, May 16

9 am - 1 pm

Manitowoc County Highway Shop  
3500 HWY 310, Manitowoc



Bring your hazardous wastes to the 2009 Clean Sweep. Many common items like automotive products, cleaners, pesticides and home improvement products are hazardous when used, stored or disposed of improperly. Help protect our water, soil, air and communities by bringing your hazardous items to this free program. Look for items that contain the following warnings on their labels: **Corrosive, Danger, Warning, Caution, Toxic, Poison, Combustible, and Flammable.**

*There have been important program changes, please review the items and guidelines!*

### UNACCEPTABLE ITEMS

- Explosives such as ammunition
- Radioactive materials such as smoke detectors
- Compressed gas tanks and high pressure cylinders such as fire extinguishers and propane tanks
- Unknown chemicals
- Tires
- **Latex paint\***
- Infectious and biological waste including sharps and needles
- Light bulbs
- Computer components, monitors and TVs
- Appliances
- Freon gases
- Pharmaceuticals

**Other disposal or recycling options exist for many unacceptable items.**

**Contact the Manitowoc County Recycling Center at 920-683-4333 or visit**

**[www.manitowocrecycles.org](http://www.manitowocrecycles.org)**

\*All residents are encouraged to dispose of latex paint in their regular trash. Just take the lid off and let it dry or add paint hardener or cat litter. Once hardened, latex paint can be disposed of in the trash.

### ACCEPTABLE ITEMS

#### Pesticides

- Insecticides
- Herbicides
- Fungicides
- Rodenticides
- Other poisonous repellents and banned chemicals (DDT)

#### Paints/Solvents

- Varnishes and Shellacs
- Turpentine and Thinners
- Lead Based Paints
- Aerosols
- Wood Preservatives

#### Cleaners/Cleansers

- Oven Cleaners
- Spot Removers
- Polishes

#### Other Materials

- Waste Oil and Filters
- Contaminated Oil
- Hydraulic Oil
- Antifreeze
- Gasoline
- Bulk Mercury
- Mercury Devices and Compounds
- Acids/Bases
- Mothballs
- Pool Chemicals
- Photographic Chemicals
- Wood Coating, Stripping and Preservative Chemicals

### Clean Sweep Volunteers Needed!!!

We need your help to make this year's Clean Sweep successful. Volunteers are needed for the Manitowoc County Clean Sweep Program to help greet people, fill out surveys, and to help with the thermometer exchange program. Please call **683-4333** and let us know how you can help.

# Hazardous Waste Clean Sweep 2009



## GUIDELINES

- Household participants may dispose of acceptable hazardous waste items at no cost.
- Participants must be residents of Manitowoc or Calumet County.
- Wastes must be brought in the original containers. Keep materials separate. Do NOT mix chemicals.
- Unknown substances and commercial waste will not be accepted.
- To prepare materials for transport, line a cardboard box with a plastic bag. Place them in the box and separate with cardboard.
- When arriving at the Clean Sweep disposal site, slow down and follow traffic directions.
- If unable to attend on then ask a neighbor to take your materials for you.

### **Program Sponsors:**

*Manitowoc County Solid Waste Dept., Manitowoc County Recycling Center, Calumet County UW Extension, The Veolia Hickory Meadows Landfill, Wisconsin Department of Natural Resources (DNR), and Waste Management Inc.*

### **Manitowoc County Highway Shop 3500 Hwy 310, Manitowoc.**



### **CALUMET COUNTY CLEAN SWEEP**

**Friday, May 15**

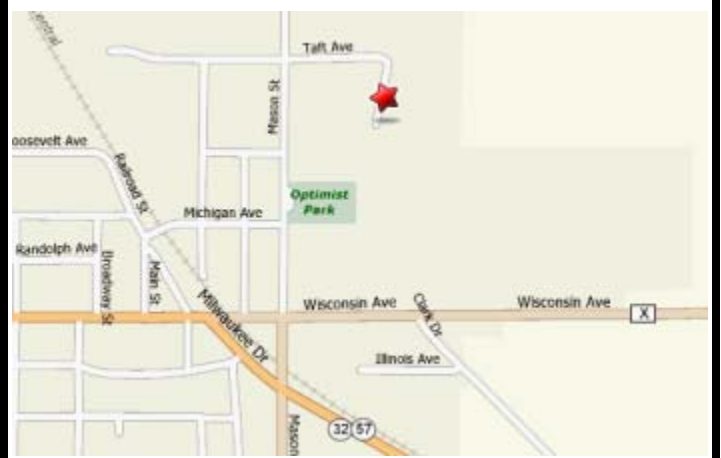
3 pm - 6 pm

New Holstein Public Works Garage  
1319 Taft Avenue, New Holstein

For specific guidelines please contact:

Calumet County Clean Sweep  
920-849-1450 ext 3

### **New Holstein Public Works Garage 1319 Taft Avenue, New Holstein.**



# Manitowoc County Compost Sites

## **Basswood Rd Compost Site**

3000 Basswood Rd, Manitowoc

Mon-Fri 7am-6pm

Sat 8am-12pm



## **Woodland Dr Compost Site**

4191 Woodland Dr, Two Rivers

Mon-Fri 10am-6pm

Sat 8am-4pm

**Accepted Items:** Grass, leaves, flowers, plants, pumpkins, fruits, vegetables, garden waste, yard waste, brush, branches (not more than 6 inches in diameter or longer than 5 feet), woodchips, saw dust, and Holiday Trees.

**Unacceptable Items:** Stumps, animal waste, sod with soil, topsoil or dirt, rocks, gravel, lumber, garbage, large branches **greater than 6 inches in diameter or longer than 5 feet.**

### **SCREENED COMPOST PRICES**

- 5 gallons: \$1.00
- 1 bushel: \$2.00
- 1 cubic yard: \$10.50
- 5 cubic yards including Delivery Charge: \$78.75

### **WOODCHIP PRICES**

- 5 gallons: \$0.25
- 1 bushel: \$0.50
- 1 cubic yard: \$5.25
- 5 cubic yards including Delivery Charge: \$52.50

### **Benefits of Compost**

Reduces the need for water, fertilizers, and pesticides

Enriches Soils

Helps clean contaminated soil

Helps prevent pollution

### **Benefits of Wood Chips**

Helps retain soil moisture

Prevents heavy rain damage

Increases survival of new trees

Reduces soil temperature extremes

Prevents direct contact with soil of vegetables

Reduces weed growth, saving time in landscape

*Unscreened  
compost  
is always  
available for  
**FREE!!!***

### **Tips for Better Composting**

1. Don't throw away your kitchen scraps – add them to the compost pile. Kitchen scraps are typically high in nitrogen, which helps heat up the compost pile and speed up the composting process. Egg shells, coffee grounds, fruit and vegetable peels and scraps are all outstanding materials to add.
2. If you're composting with a compost pile, bigger is often better. Heat builds up with a big pile. You don't want to get much bigger than about 3 feet by 3 feet though.
3. Keep your compost aerated! If you are composting with a tumbling composter, make sure you turn it whenever you add new materials. If you are composting with a pile, or in a static (non-tumbling) compost bin, be sure to mix up the contents so that the pile gets oxygen and can break down effectively.
4. Don't let the compost completely dry out. A compost pile needs moisture to keep the composting process active.
5. Don't keep your compost too wet so that it gets soggy and starts to stink. Just as too dry is bad, too wet is also something that you should avoid.
6. Too much of any one material will slow down the composting process. If you have all leaves, all grass clippings or an overload of any other single type of material, it can throw off the balance of the pile. In general, it's good to keep a mix of green and brown material.

Source: [www.compostguide.com](http://www.compostguide.com)

### **Compost Bin Sale**

Gardeners and homeowners, turn your household food scraps into rich compost for your garden or plants. Not only does home composting provide excellent compost, but you can also save on your garbage disposal costs. Large, 13-cubic foot compost bins with locking lids are available at the Recycling Center for only: **\$45.00**

*Stop by the Recycling  
Center at any time  
During normal  
business hours  
and take a look at our  
floor model.*



## Manitowoc County Recycling Center

3000 Basswood Road P.O. Box 351  
Manitowoc, WI 54220-0351



**Manitowoc County Recycling Center**  
3000 Basswood Road,  
Manitowoc, WI 54220  
Phone: 920-683-4333  
Fax: 920-683-5030  
[www.manitowocrecycles.org](http://www.manitowocrecycles.org)

### Residential Drop Off

You can drop off the following materials for recycling:

**Plastic Bottles, Tin and Aluminum Cans, Glass Bottles,  
Magazines, Newspaper, Cardboard, Paper.**

Please call the Recycling Center if you have questions regarding where to recycle other materials or visit [www.manitowocrecycles.org](http://www.manitowocrecycles.org) for a complete list.

**BE GREEN  
AND SAVE US  
SOME GOLD!**

Instead of receiving a mailed copy of the MRFTURF you can receive it by email as a PDF.

Email [bobbischuetze@co.manitowoc.wi.us](mailto:bobbischuetze@co.manitowoc.wi.us) with your name, email, and mailing address so we can make the switch.

Congratulations to Woodland Dunes on making the switch and winning a Compost Bin!

**Thank you for your consideration!**

*The Manitowoc County Recycling Center is managed and operated by Holiday House of Manitowoc County Inc.  
Serving people with disabilities since 1957.*

